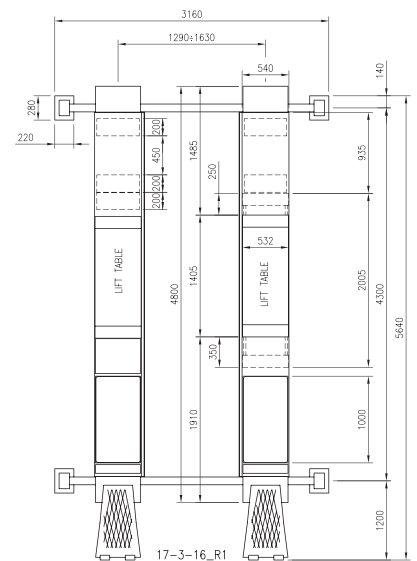
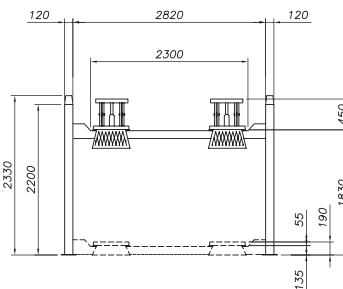


Electro-Hydraulic Four Post Lift

Model: 443 ATLT 48

Capacity: 4,000 kg

- Electro-hydraulic 4 post lift with front recesses and rear slipping plates for wheel alignment and built-in lifting table
- Low profile
- High lifting and descent speed
- Safety device in case of cable breakage
- Overload safety device
- Descent control valve
- Automatic descent control
- Sound proof safety device
- “Buzzer” on last portion of descent
- Pipe burst safety valve
- 24V, low tension dead man controls



Dati tecnici



Technical data



Technische
Eigenschaften



Caractéristiques
techniques



Datos técnicos

Portata	Capacity	Tragfähigkeit	Capacité	Capacidad	4.000 kg
Peso	Weight	Gewicht	Poids	Peso	1350/1400/1500 kg
Salita/Discesa	Lifting/descent	Hub/Senkzeit	Levage/descente	Subida/Bajada	30 s
Altezza di sollevamento	Lifting height	Hubhöhe	Hauteur de levage	Altura de elevación	1830+450 mm
Motore	Motor	Motorleistung	Puissance moteur	Motor	3,0 kW - 3 ph 230 400V/50 Hz



FOR MORE INFORMATION, PLEASE CONTACT

1300 694 363

SALES@GENESEQUIPMENT.COM.AU

UNIT 2 / 67 RADLEY ST, VIRGINIA QLD 4014

0459 505 018

WWW.GENESEQUIPMENT.COM.AU

PO BOX 435, VIRGINIA BC QLD 4014

WORKSHOP FITOUTS | VEHICLE LIFTS | WORKSHOP EQUIPMENT | SERVICE & PARTS