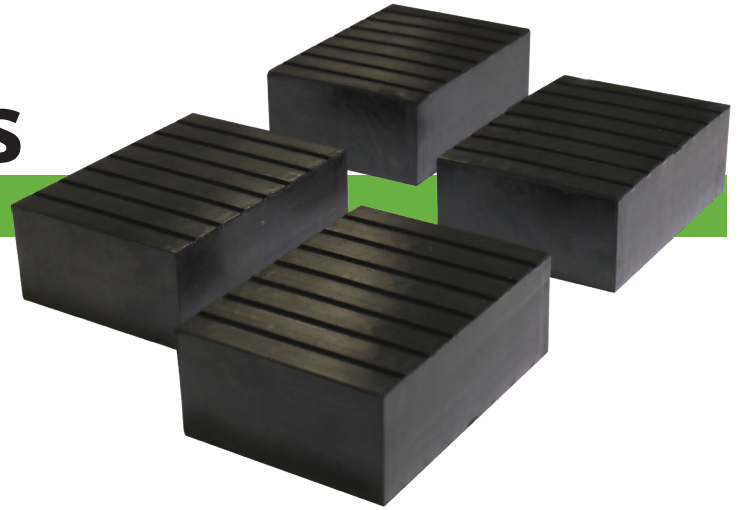


Low-Profile Blocks

1.5" HEIGHT • SET OF FOUR



Low blocks add an extra level of versatility to your lifting capabilities. For QuickJack to efficiently generate enough force to lift a vehicle, there needs to be some space between the lifting blocks and the vehicle's OEM jack points. Low ground-clearance cars can close that gap quickly, and sometimes the medium block is a touch too tall for the job. That's why we offer this low-profile block, which barely rises above the top of the frame, so your vehicle never makes direct contact with the steel frames. Every bit as safe and durable as our standard blocks, they can be stacked on top of one another or on top of a tall or medium block. Never stack all three blocks together.

Note: Unlike our low-profile blocks, every QuickJack assembly includes sets of four medium and four tall rubber blocks. They are sold in sets of four. Both medium and tall blocks can be found under QuickJack parts.

SPECIFICATIONS

A - Length	6.5" (165 mm)
B - Width	4" (102 mm)
C - Height	1.5" (38 mm)

